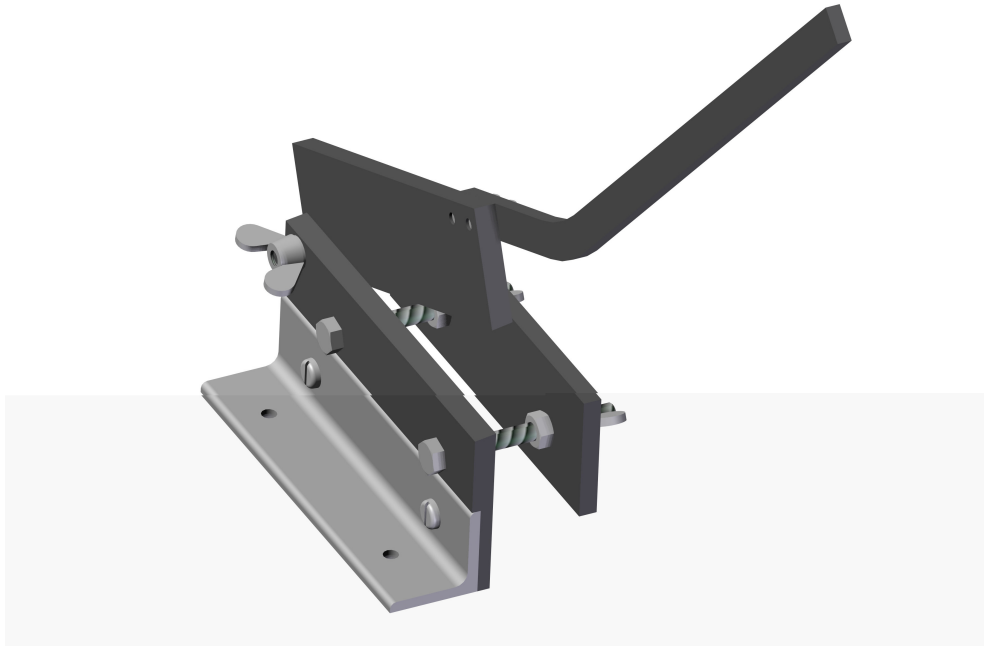


Sheet metal cutter

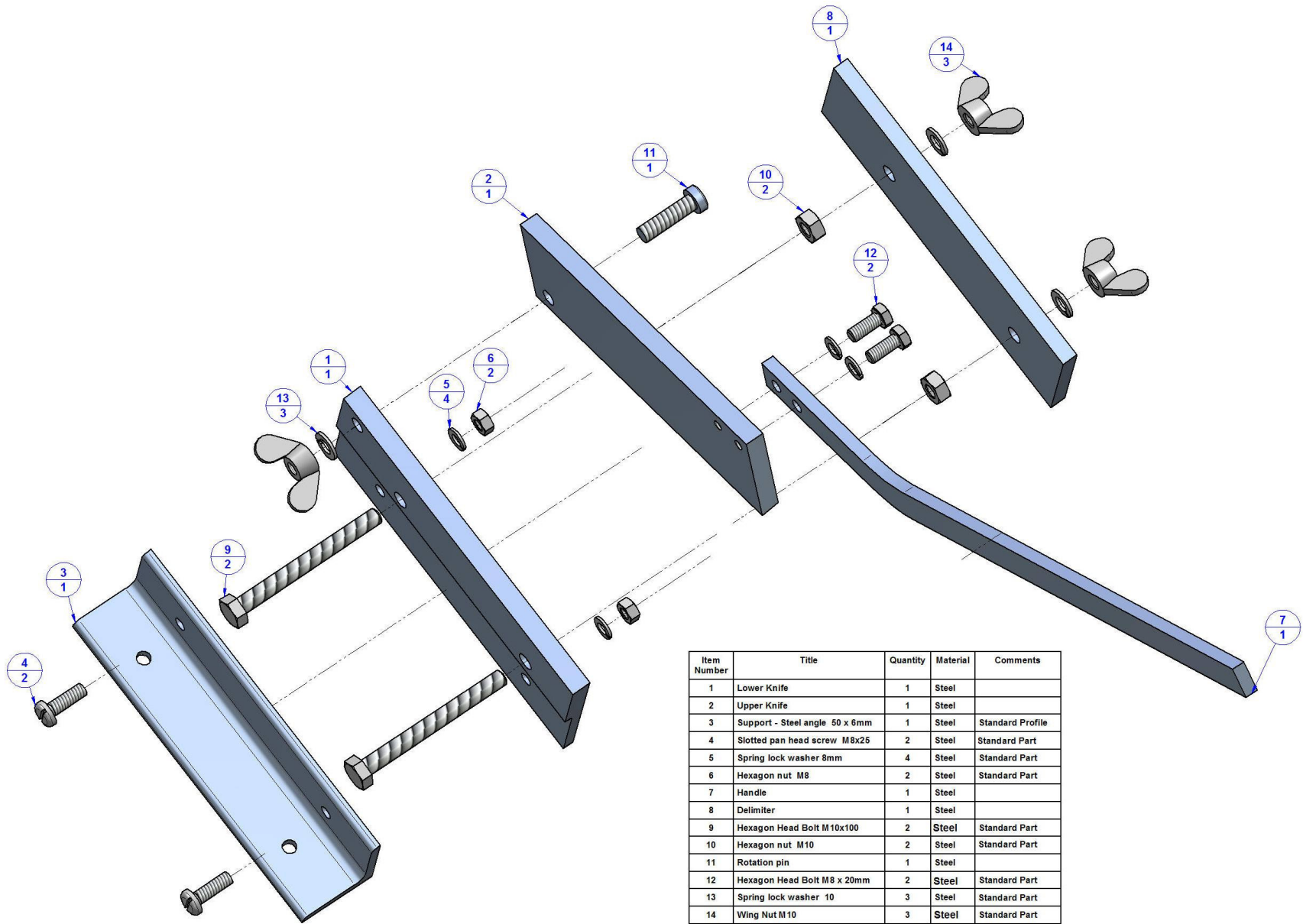
Maximal thickness of the steel sheets that you can cut with this tool is 2mm.



Lower knife (item 1) and Upper knife (item 2) have to be tempered in order to harden them and besides that, these two items have to be made out of the quality steel with high hardness.

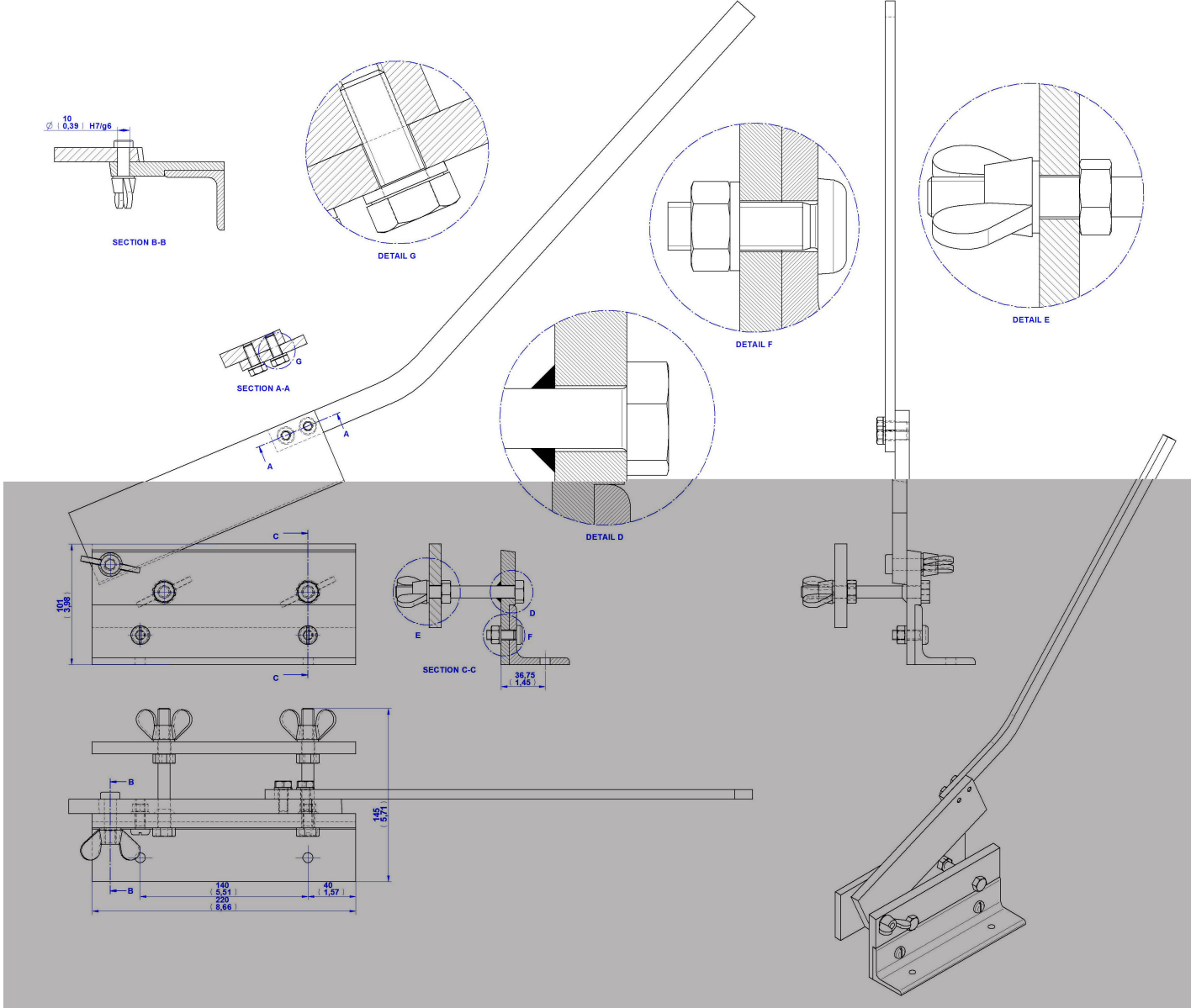
Do not forget to chamfer the edges on items 1, 2, 3, 7 and 8. This way you will avoid injuries that can happen on very sharp edges. It should become a rule when you work with metal items that are being made by cutting, milling or turning.

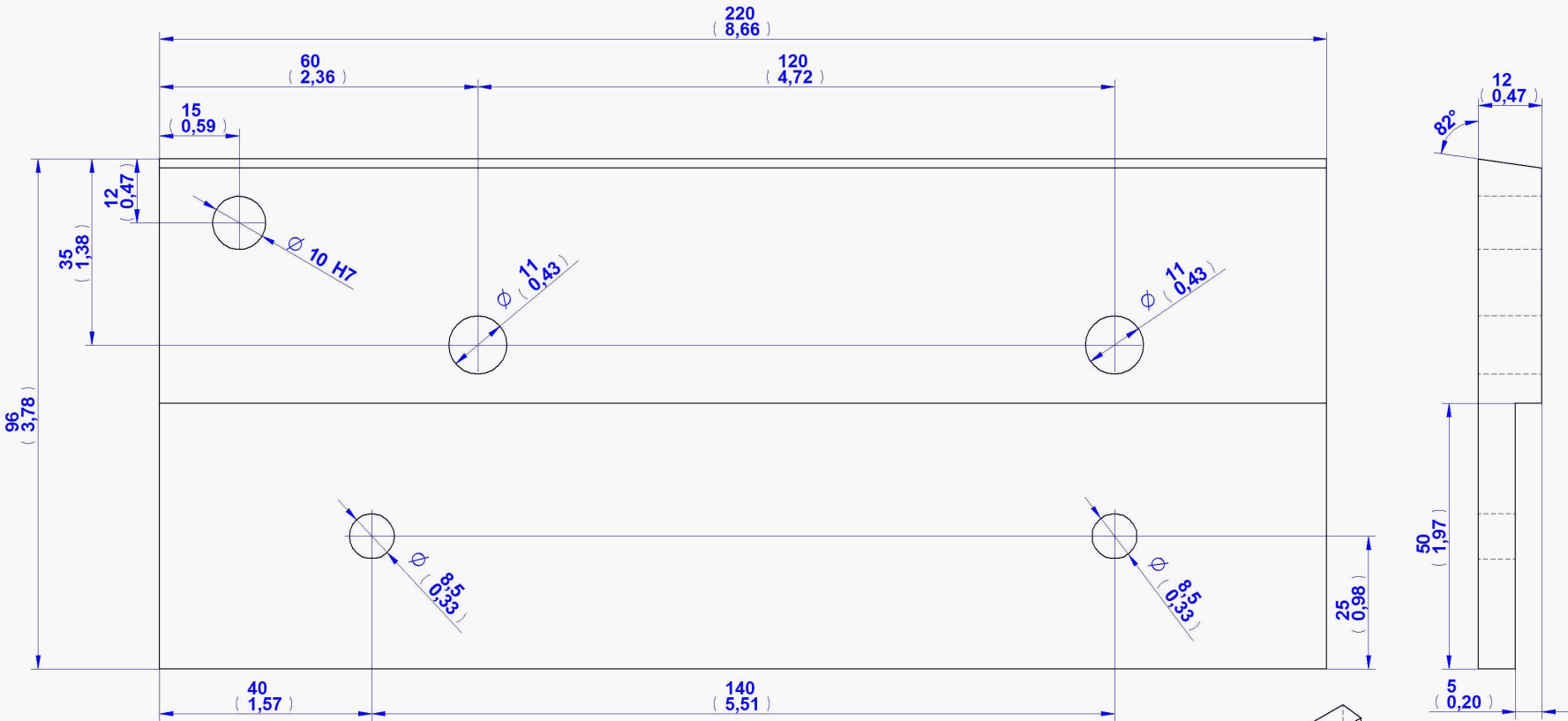
Parts List



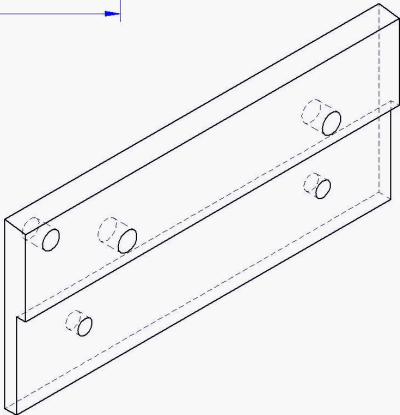
Item Number	Title	Quantity	Material	Comments
1	Lower Knife	1	Steel	
2	Upper Knife	1	Steel	
3	Support - Steel angle 50 x 6mm	1	Steel	Standard Profile
4	Slotted pan head screw M8x25	2	Steel	Standard Part
5	Spring lock washer 8mm	4	Steel	Standard Part
6	Hexagon nut M8	2	Steel	Standard Part
7	Handle	1	Steel	
8	Delimiter	1	Steel	
9	Hexagon Head Bolt M10x100	2	Steel	Standard Part
10	Hexagon nut M10	2	Steel	Standard Part
11	Rotation pin	1	Steel	
12	Hexagon Head Bolt M8 x 20mm	2	Steel	Standard Part
13	Spring lock washer 10	3	Steel	Standard Part
14	Wing Nut M10	3	Steel	Standard Part

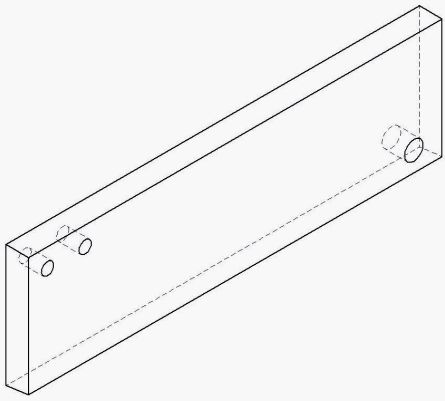
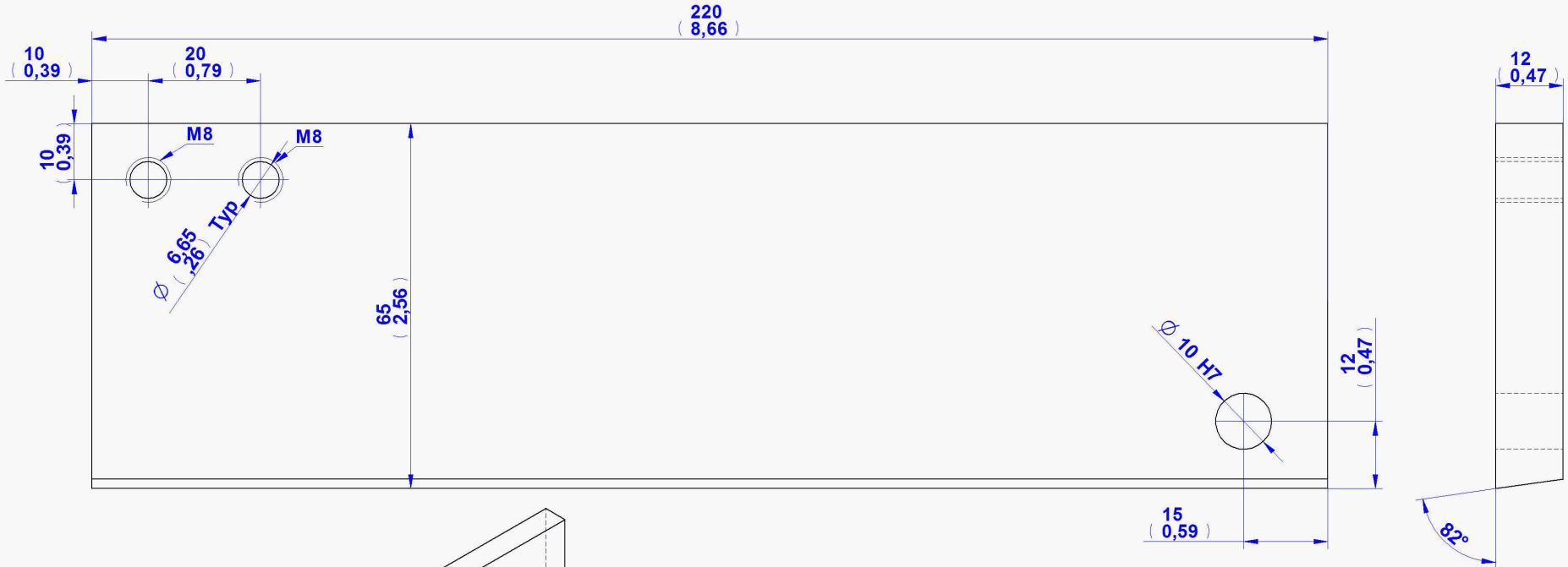
2D Documentation



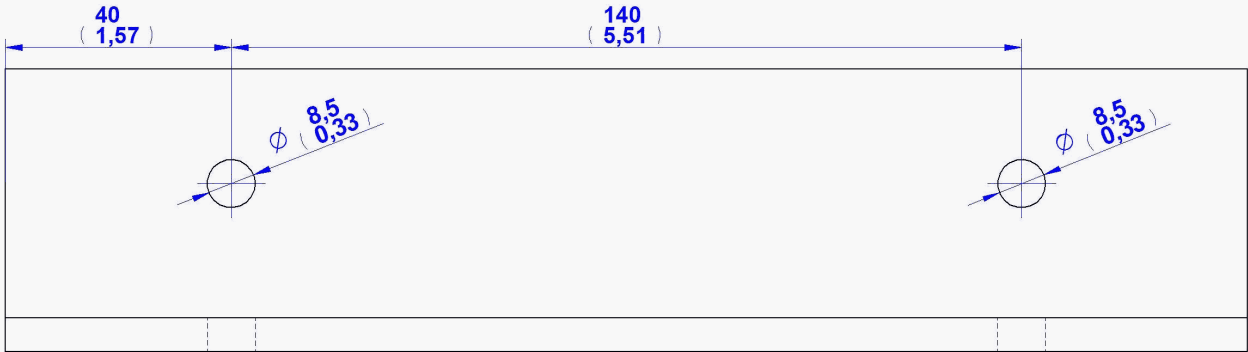
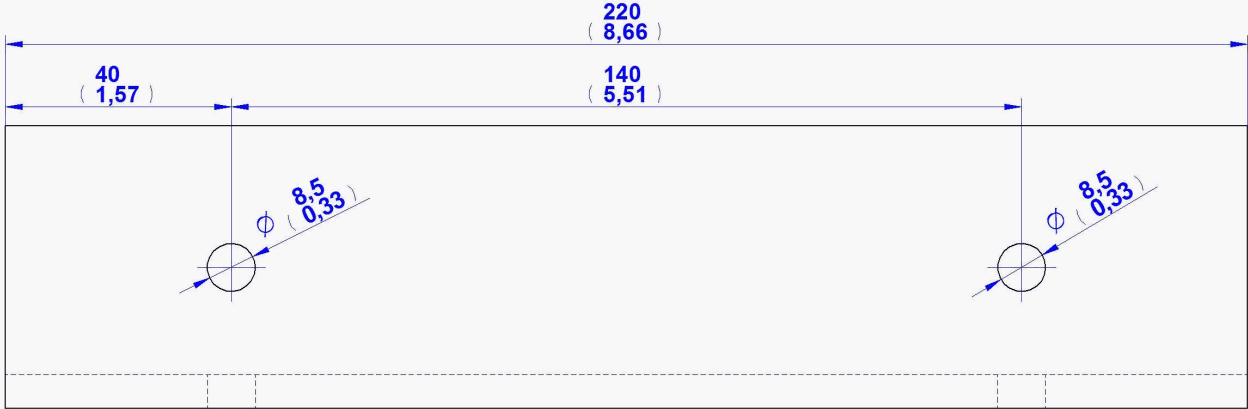
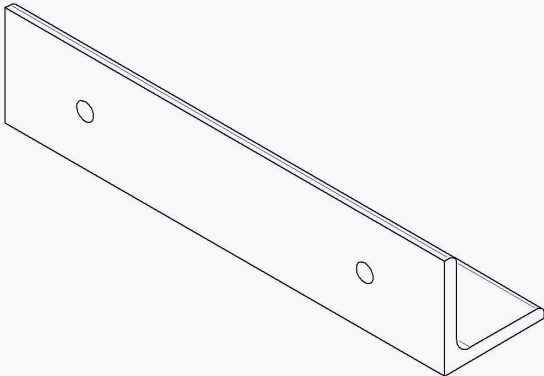
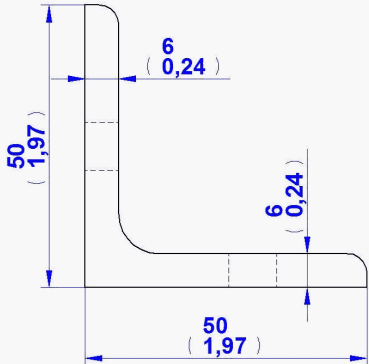


1. Lower Knife



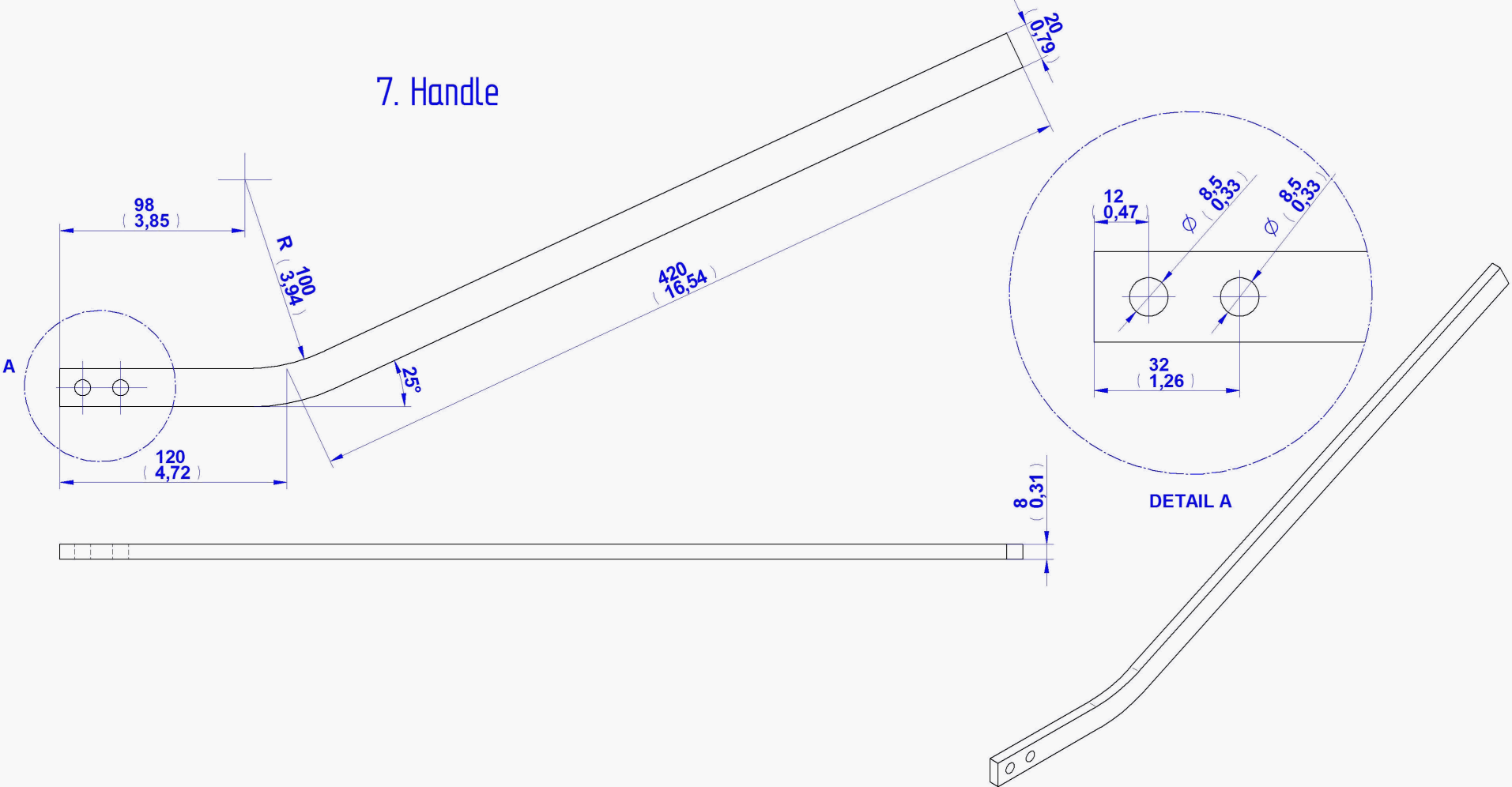


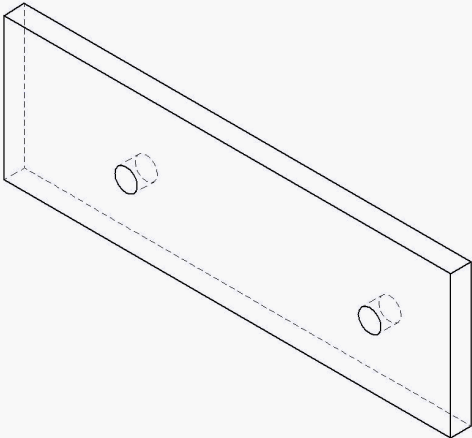
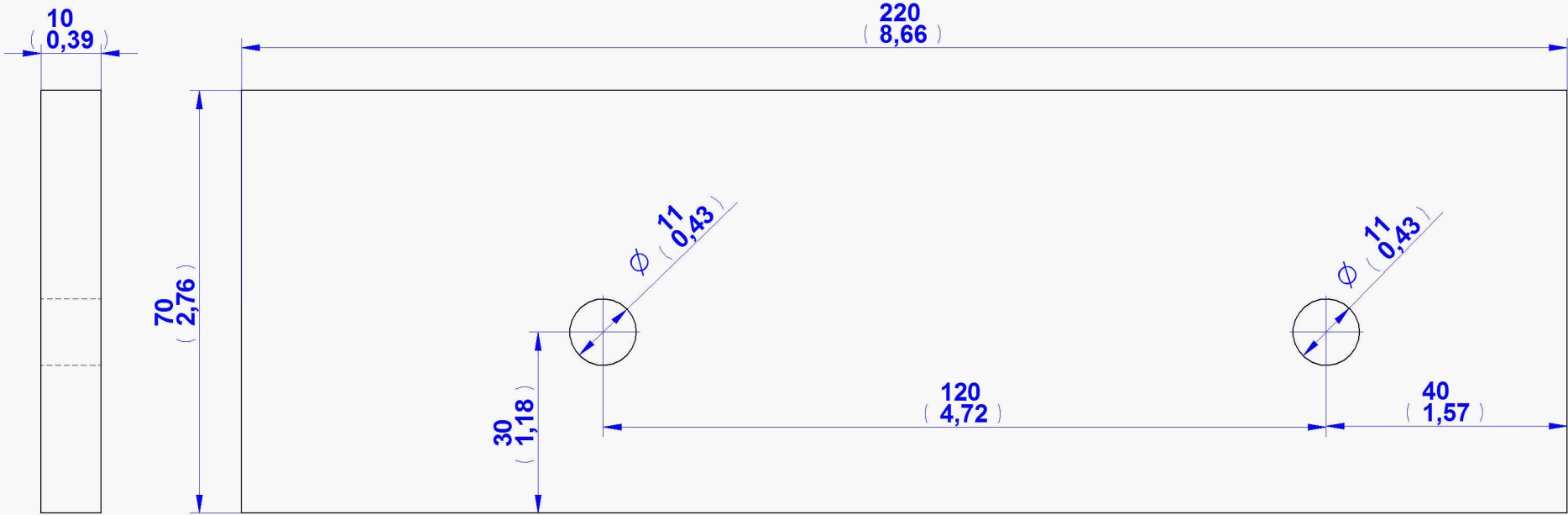
2. Upper Knife



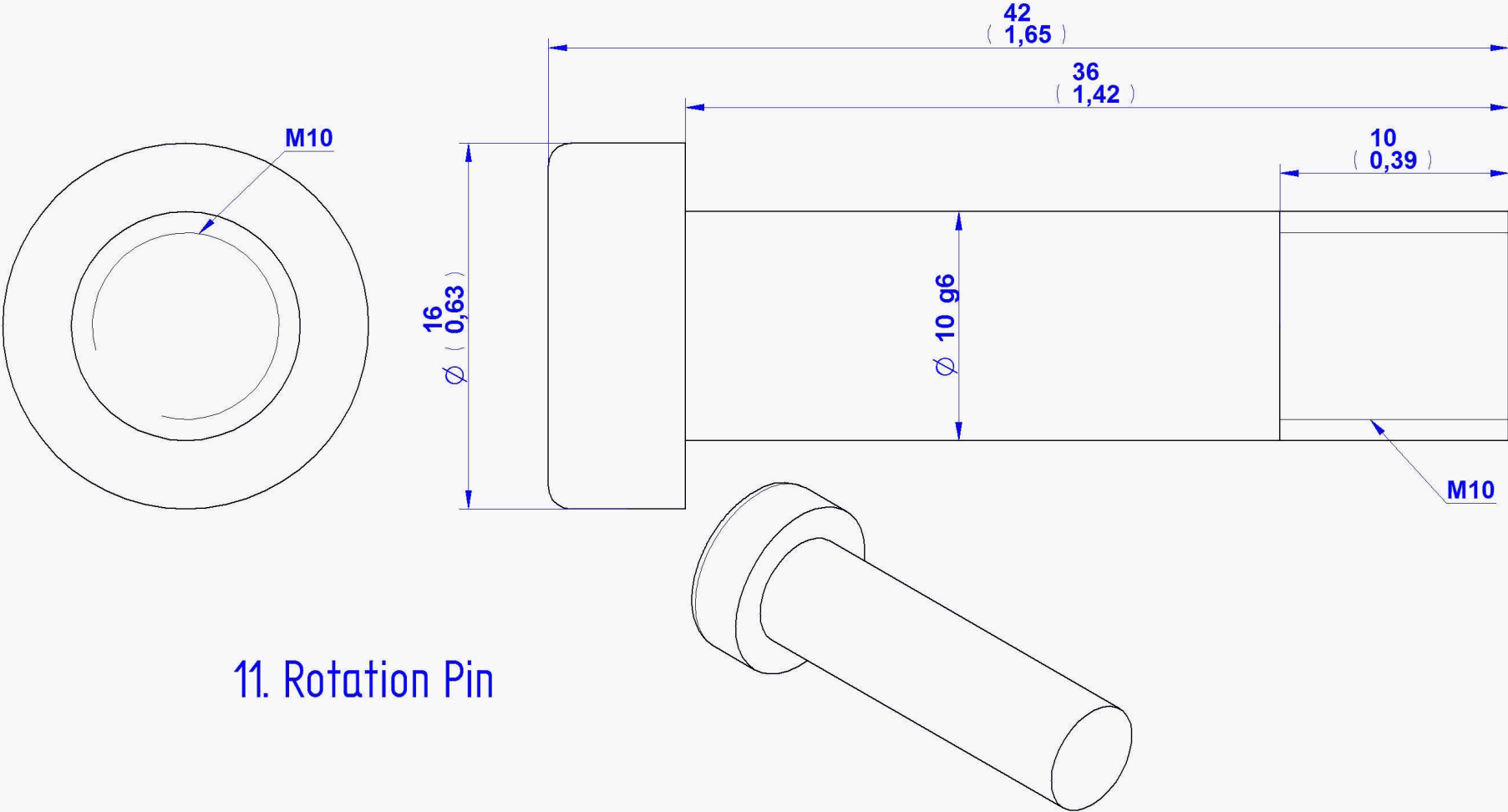
3. Support-Steel Angle 50x6mm

7. Handle



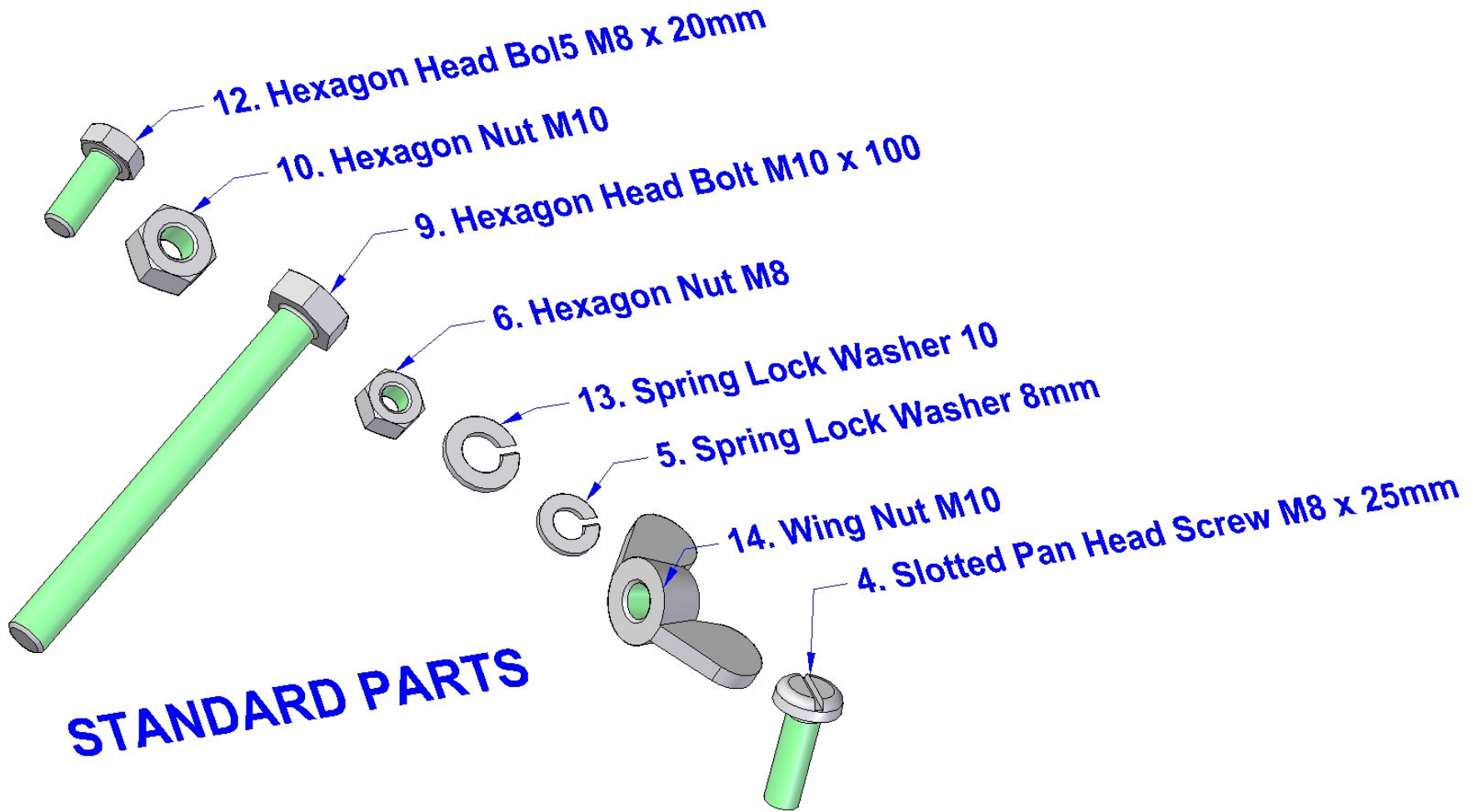


8. Delimiter



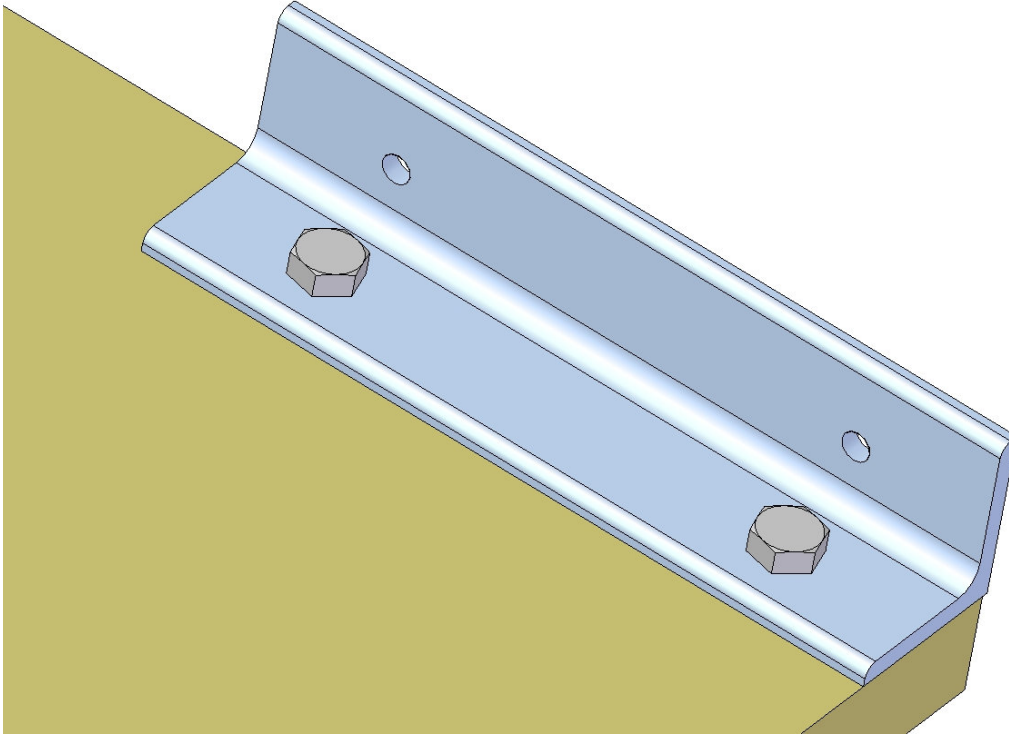
11. Rotation Pin

Standard Parts

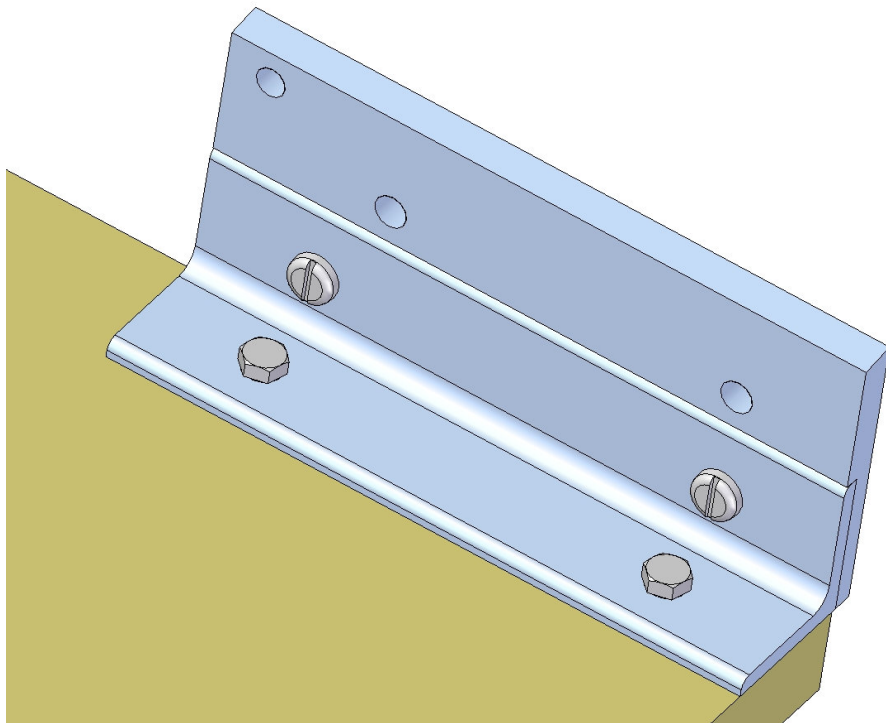
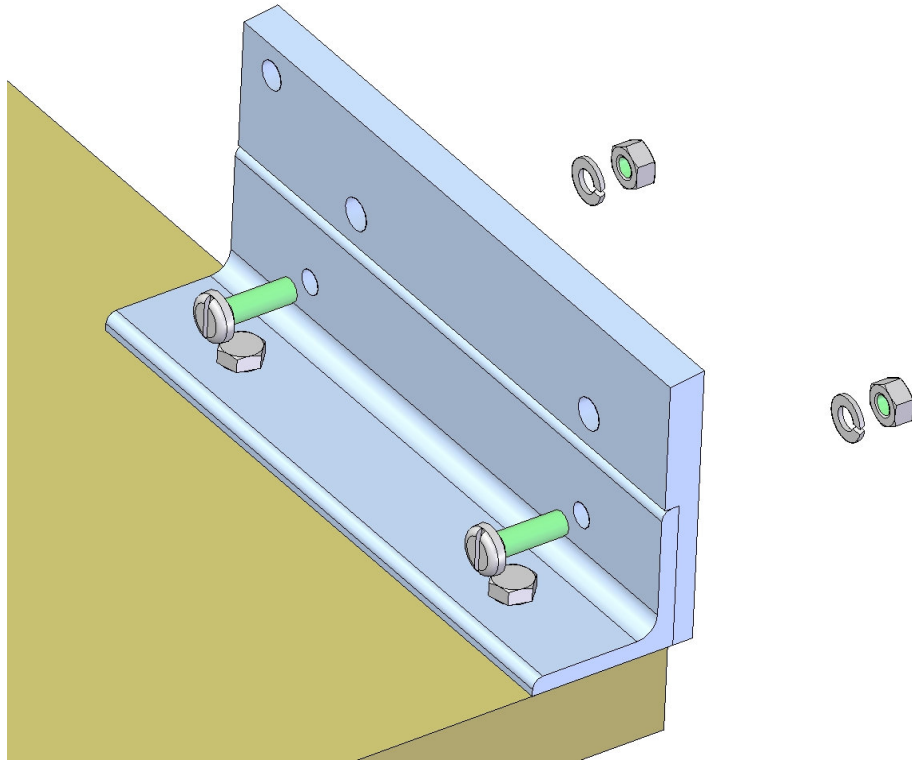


Assemblage Instruction

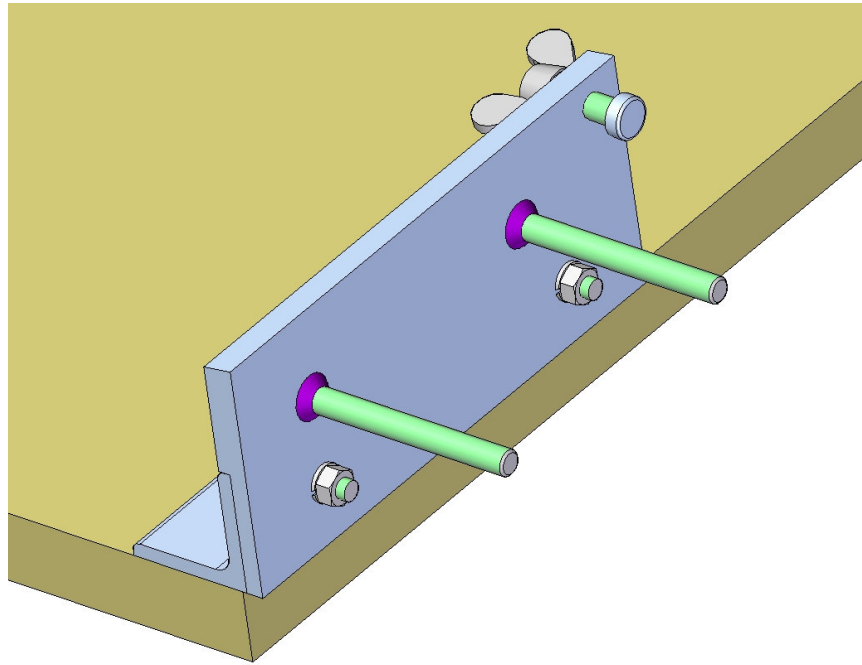
1. Fasten the Support (item 3) to the edge of your workbench, or some other appropriate place.



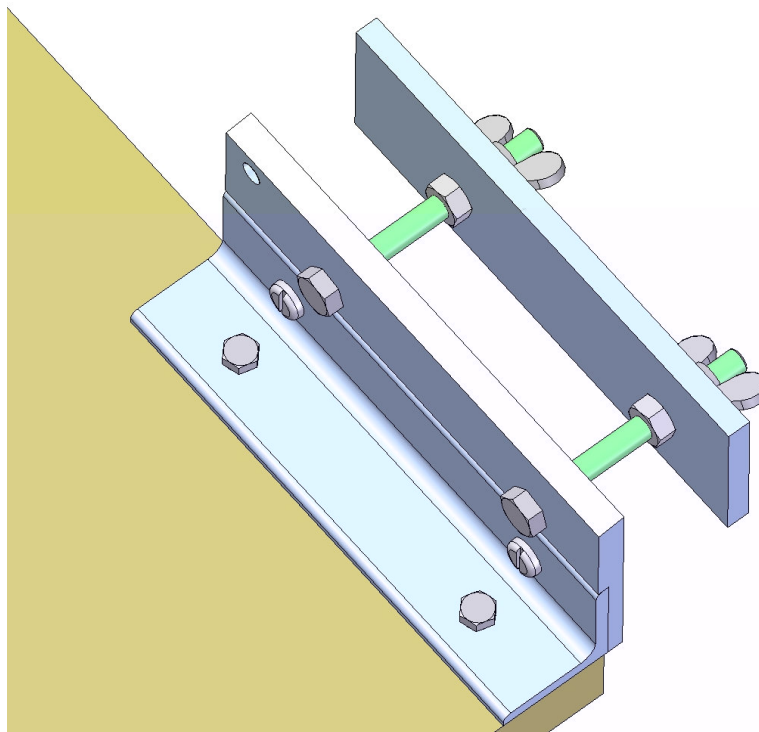
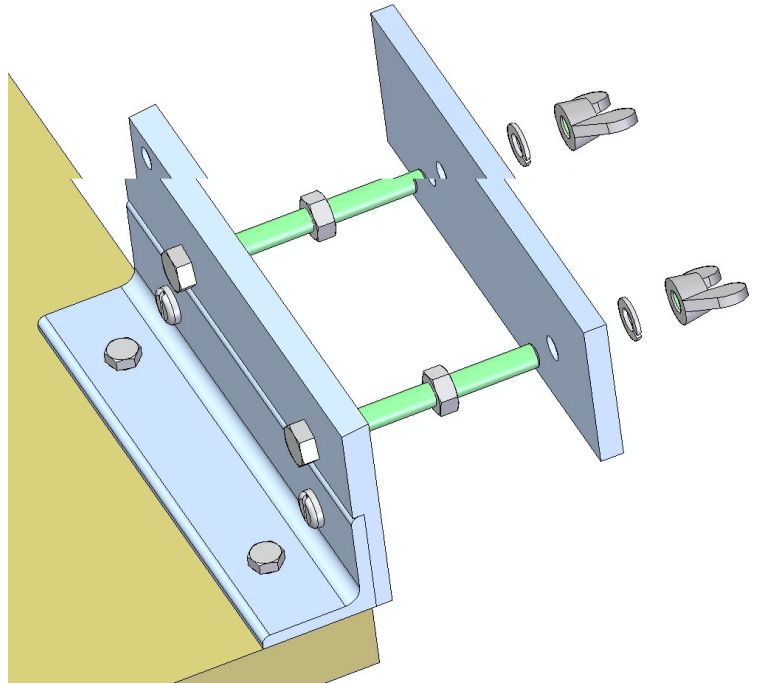
2. Fasten the Lower knife (item 1) to the Support (item 3) with bolt binding.



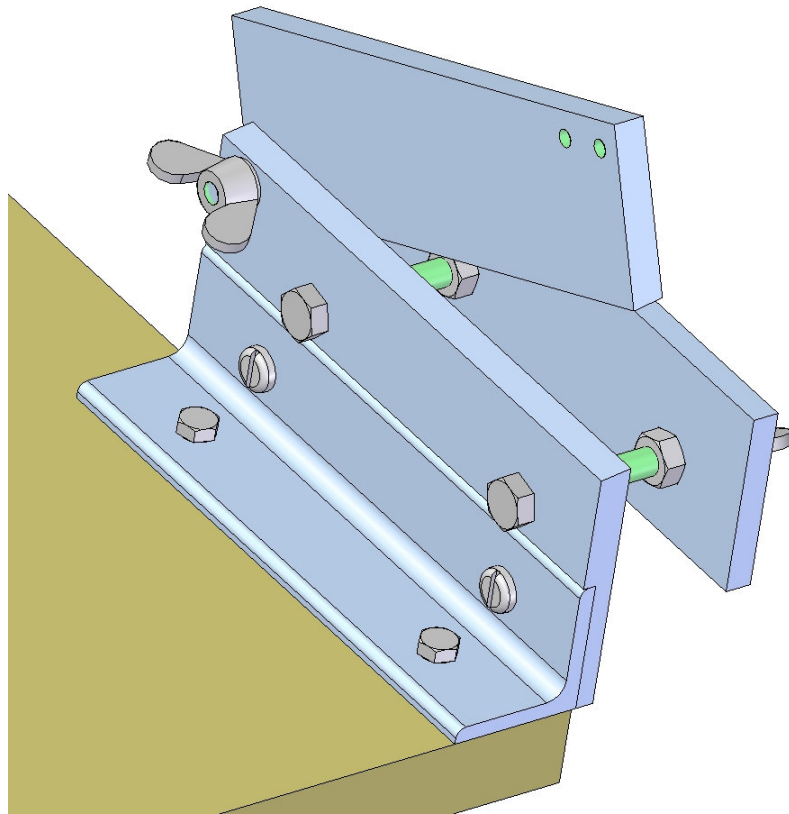
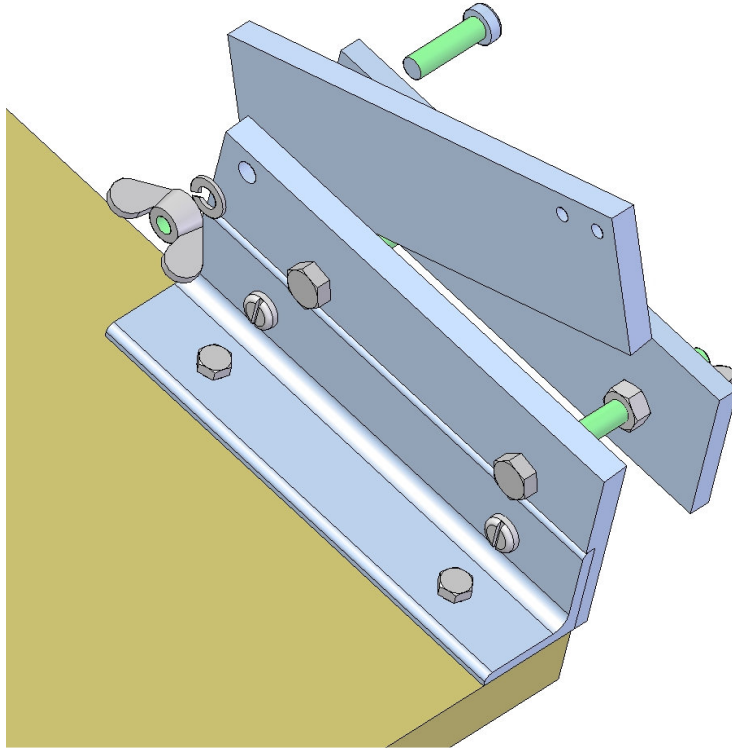
3. Weld the Hexagon Head Bolts (item 9, M10 x 100mm) to the Lower Knife (item 1).



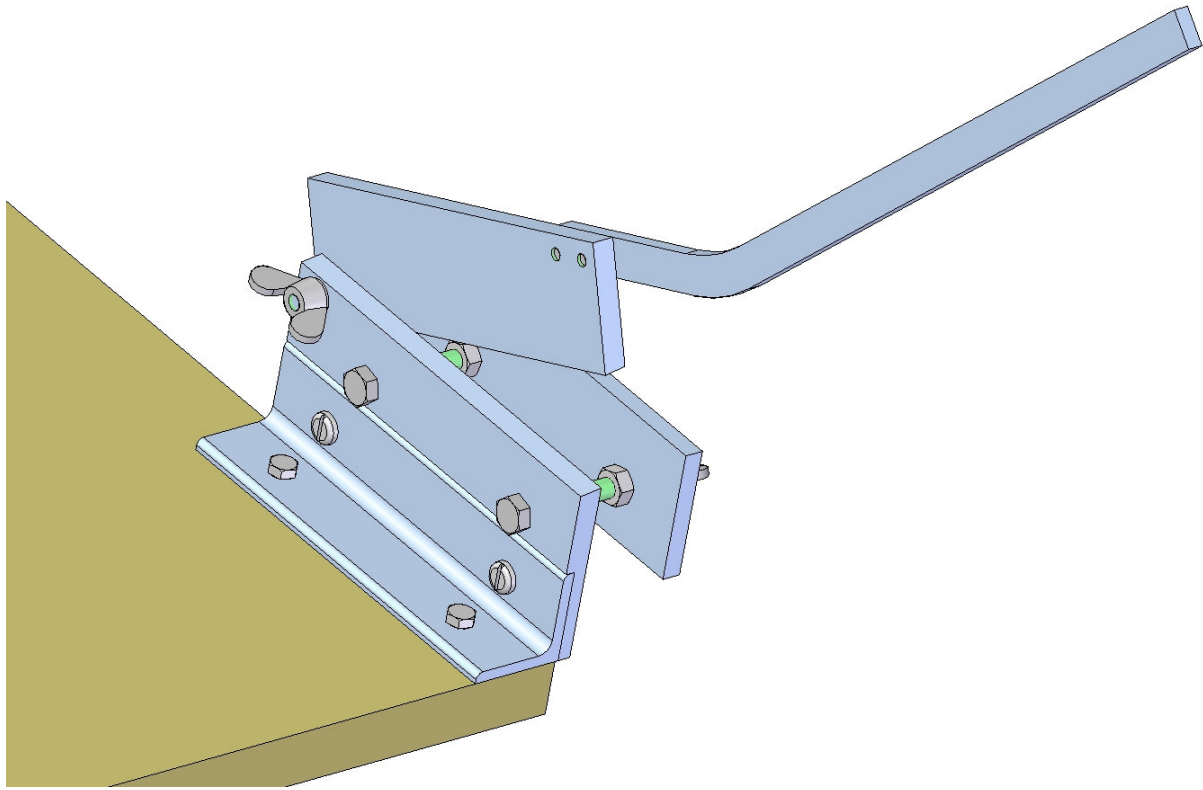
4. Fasten the Delimiter (item 8) to the previously made construction with bold binding.



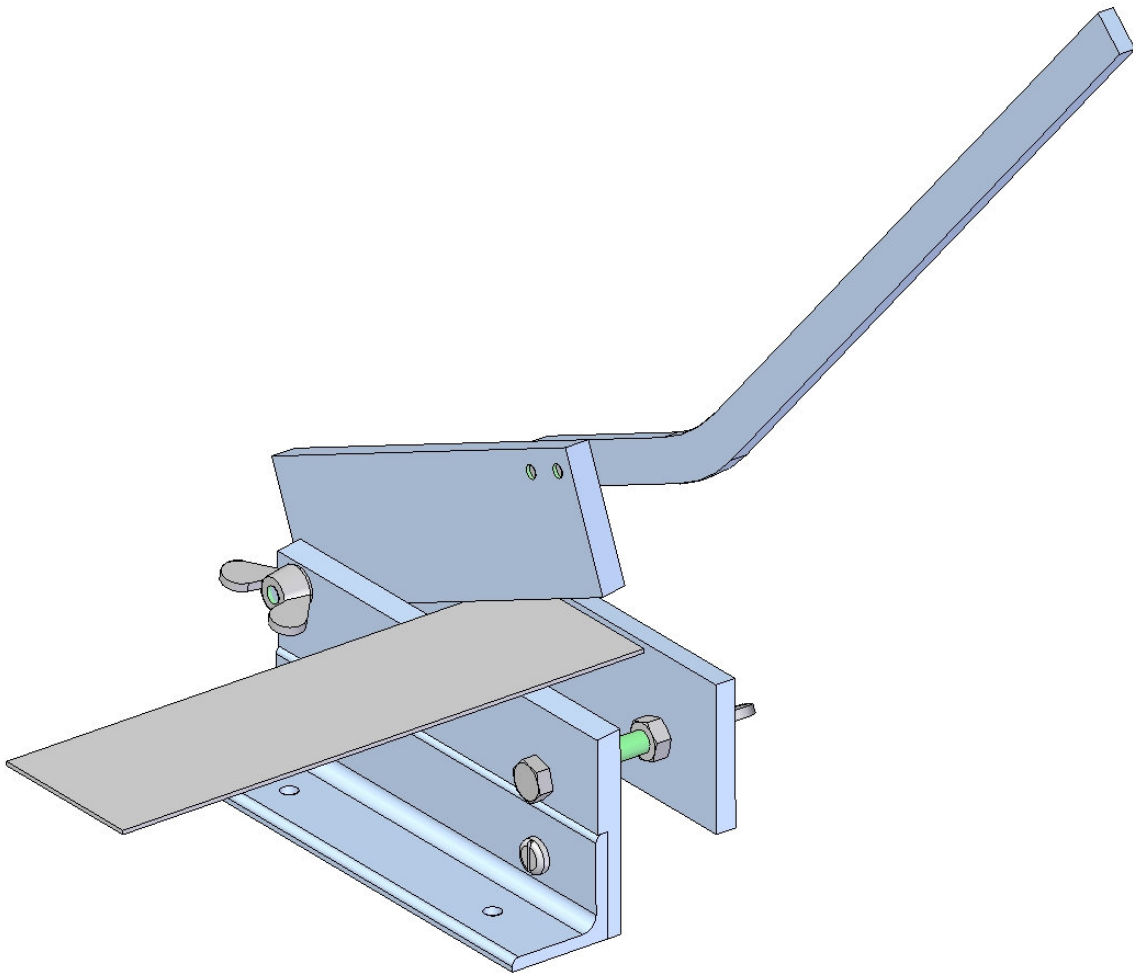
5. Fasten the Upper Knife (item 2) to the previously made construction.



6. Fasten the Handle (item 7) to the previously made construction.



The procedure of cutting the sheet begins by placing delimiter on the required distance from the Lower knife. After that, the steel sheet is being placed on the left between the knives, until it reach delimiter. By pulling down the Handle, you will cut the sheet with the exact width as it is between delimiter and lower knife.



If you want to cut metal sheet with bigger width than the maximal distance between delimiter and Lower knife, you'll have to remove a delimiter, mark the line on the sheet by hand and slowly cut the sheet by that line.